



**Willamette Water Supply**  
*Our Reliable Water Future*

Interactive Schedule Map

March 24th, 2021

# Topics

- Program Overview
- GIS and its role at the WWSP
- Tool Background and Creation
- Benefits
- Demo live map tool
- Q & A

# Water Supply Program Overview



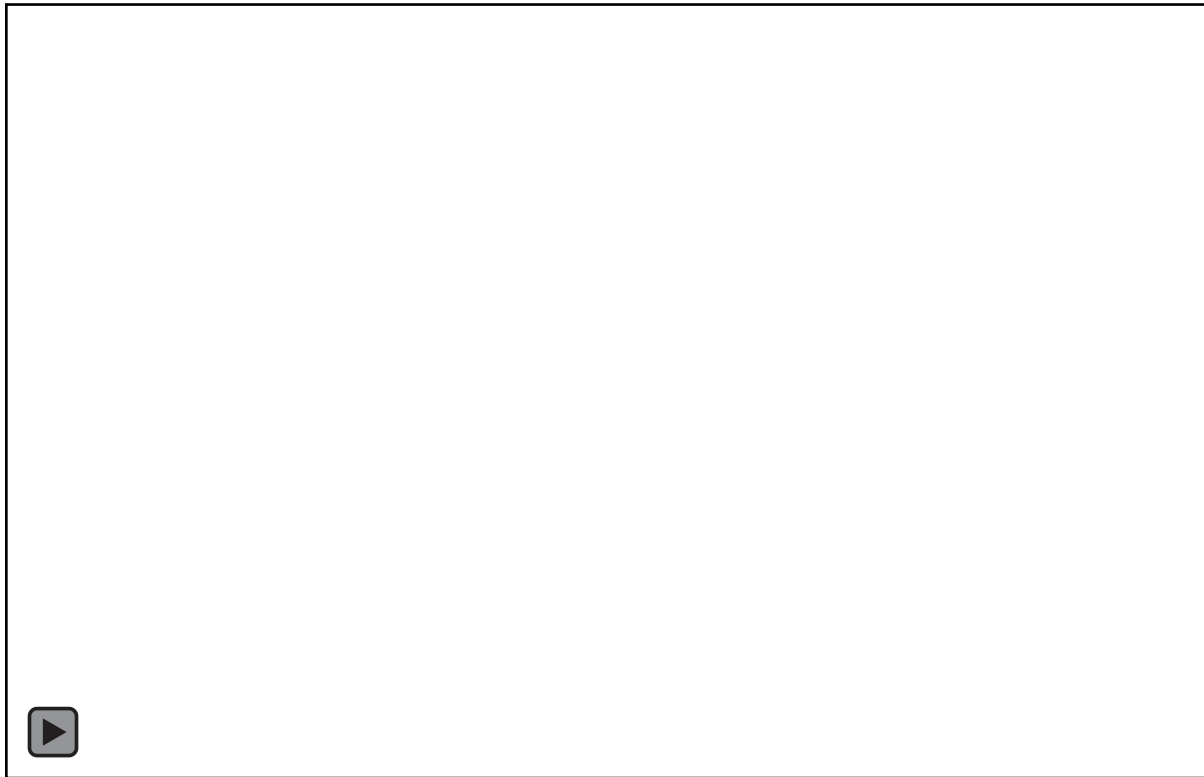
1. Modified water intake
2. New water treatment plant
3. 30+ miles of large diameter pipeline
4. Water storage tanks

*Operational in 2026*

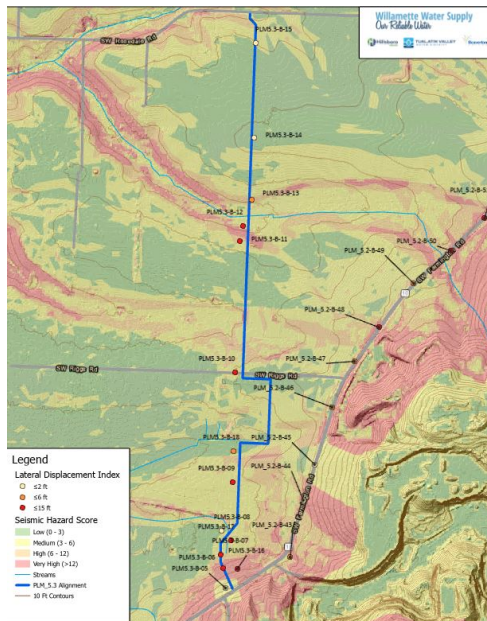
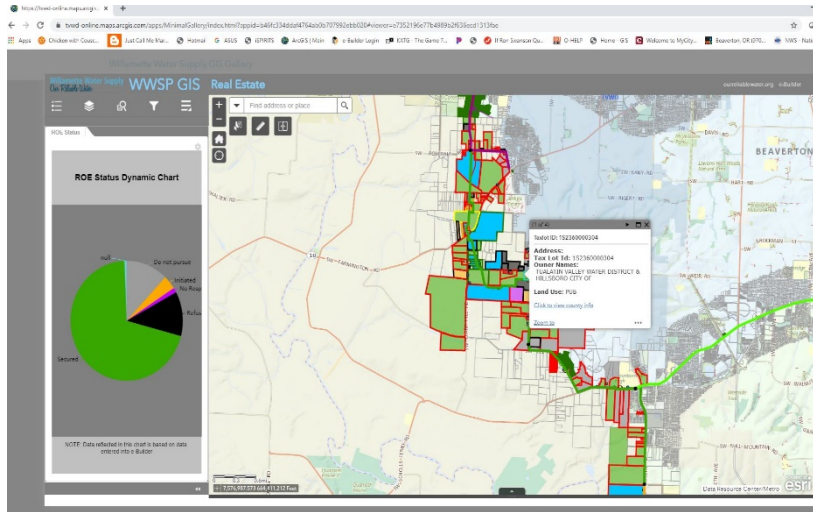
*Project cost estimate: \$1.3 billion*



# What is GIS?



- Geographical Information System (Or Science)
- Combines spatial features with tabular data (database)
- Provides visual way to view data to find patterns and relationships.



# Role of GIS

Support WWSP Staff with:

1. Map Exhibits
2. Spatial Analysis
3. GPS Survey (global positioning system)
4. Asset mapping and database
5. Map apps and tool development and support

# Tool Background

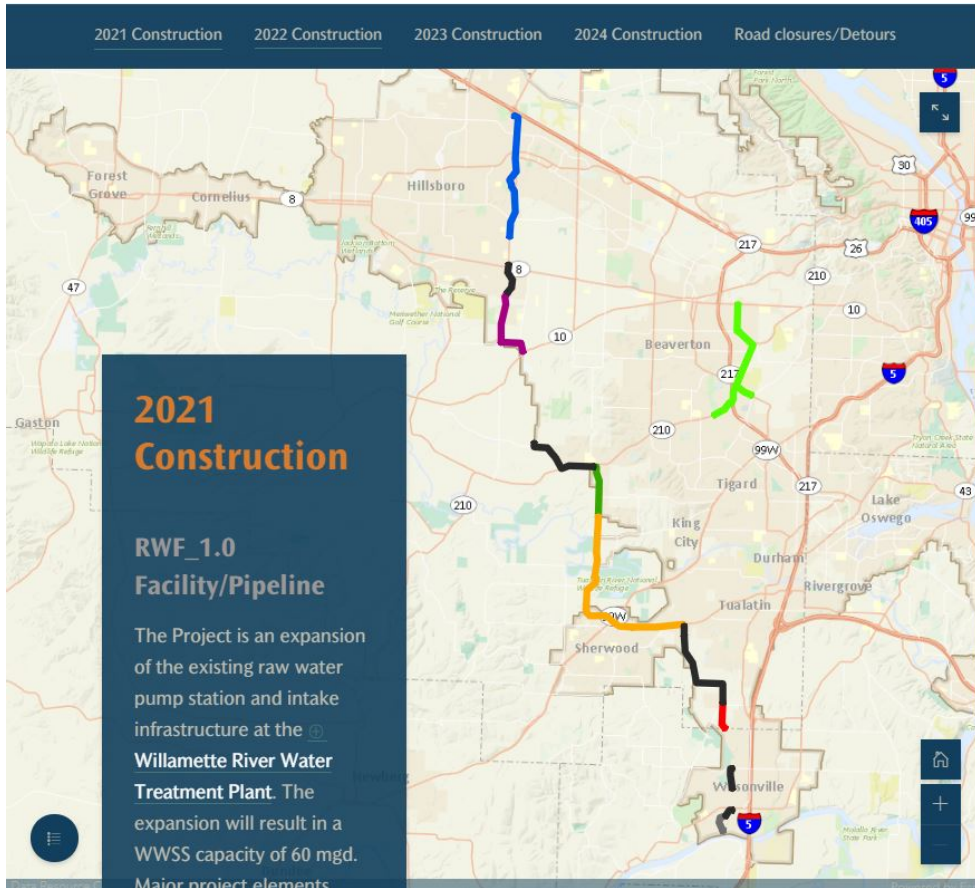


- Outreach Team wants a way to communicate where and when pipeline construction impacting roads
- Simple and engaging way for customers and impacted residents to view information

# Story Map creation

- GIS Data
  - Create construction dates to alignment layer
  - Map configuration
- Create 3d project fly overs
- Configure app
  - Add map elements/3d flyovers
  - Add project information
  - Interactive links and actions
- Review and make changes

# Benefits



- Easy to use interface
- Geographic visualization of information
- Users can explore map, dates and project information
- Nothing to download and sizes based on device
- Technology leverages existing software (no additional costs)



Demo!



**QUESTIONS?**

**THANK YOU!**

[info@ourreliablewater.org](mailto:info@ourreliablewater.org)

[www.ourreliablewater.org](http://www.ourreliablewater.org)