



TUALATIN VALLEY
WATER DISTRICT

Willamette Water Supply Program Construction Updates

Thursday, January 28, 2021

Tom Hickmann, PE – Chief Executive Officer

Dave Kraska, PE – Willamette Water Supply Program Director

Andre Tolme – Willamette Water Supply Program Construction Manager

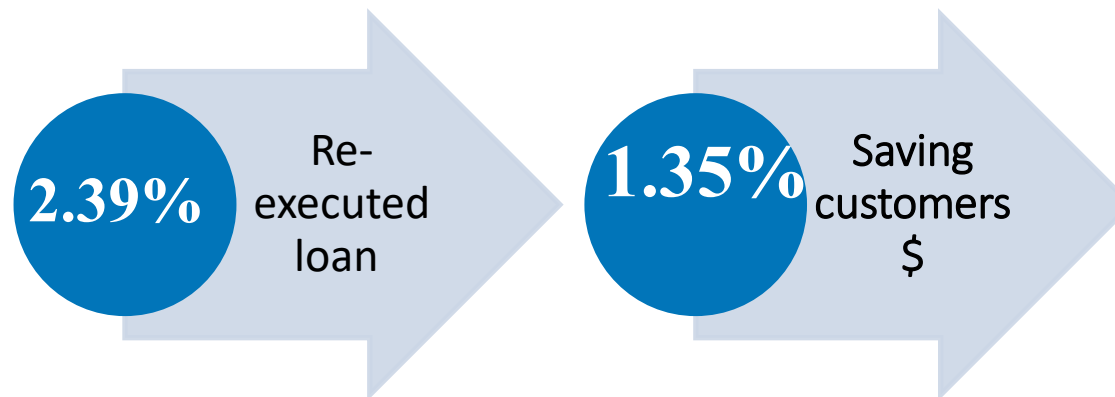
Feel free to type Questions in the Chat.

Water Infrastructure Process

- The planning for water supply needs goes back at least 50 years.
- The Willamette Water Supply Program planning started decades ago and the construction is underway now and is scheduled for completion in 2026.
- Major investment in an additional water supply is vital to the region.

TVWD Financial Outlook

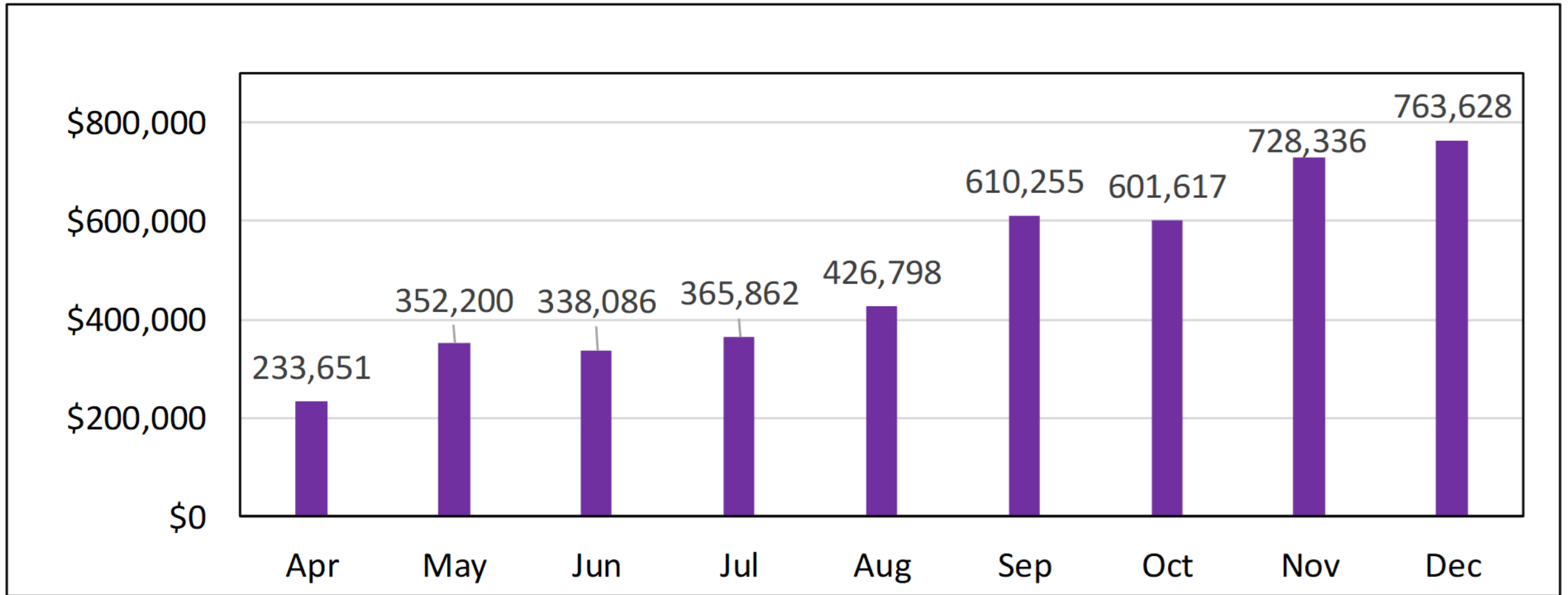
- TVWD holds an AA+ credit rating.
- The WWSP is a partnership with three owners.
- WIFIA financing was secured for the Willamette Water Supply system.
 - Original loan at 2.39%
was re-executed at 1.35%.



COVID-19 has presented financial challenges including:

- Significant drop in water sales
- Growth in customer unpaid balances.

Accounts Receivable of Customers



Willamette Water Supply

Our Reliable Water

Willamette Water Supply Program Overview

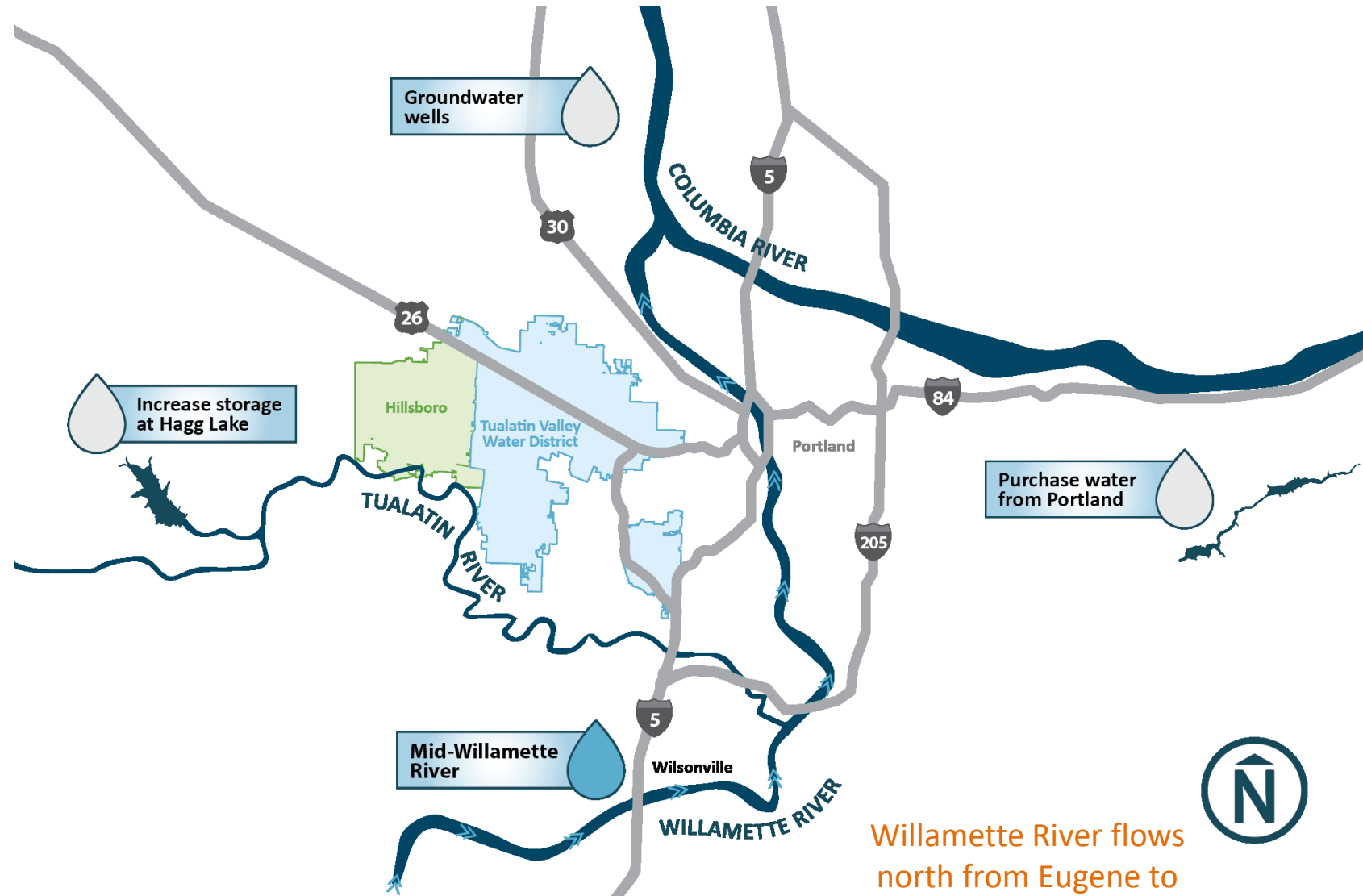


TUALATIN VALLEY
WATER DISTRICT



TVWD selected the Willamette River after a multi-year technical study and public input

- ✓ Lower cost – less impact on rates
- ✓ Excellent water quality
- ✓ Ownership
- ✓ Reliable supply
- ✓ Fewer environmental impacts



Willamette River flows north from Eugene to the Columbia River.

Water Supply Program

1. Modified water intake
2. New water treatment plant
3. 30+ miles of large diameter pipeline
4. Water storage tanks

Project cost estimate: \$1.3 billion



WWSP employs robust processes to maximize value and control costs

- Maximize competition on contracts
 - Right-sized projects
 - Outreach
 - Quality designs
- Continuous value engineering
- Commodities tracking
- Rigorous change management
- Claims avoidance and management
- Systems and tools for proactive control

History of WWSP Projects Bid to Date	
Number of projects bid	9
Total budget for projects	\$153,359,414
Total contractors' bids plus contingency	\$150,226,575
Difference	(\$3,132,839), -2%

The Program is...

- ✓ Building a secure drinking water system.
- ✓ Preparing for the future.
- ✓ Improving our economy.

Water conservation will continue to be a priority.

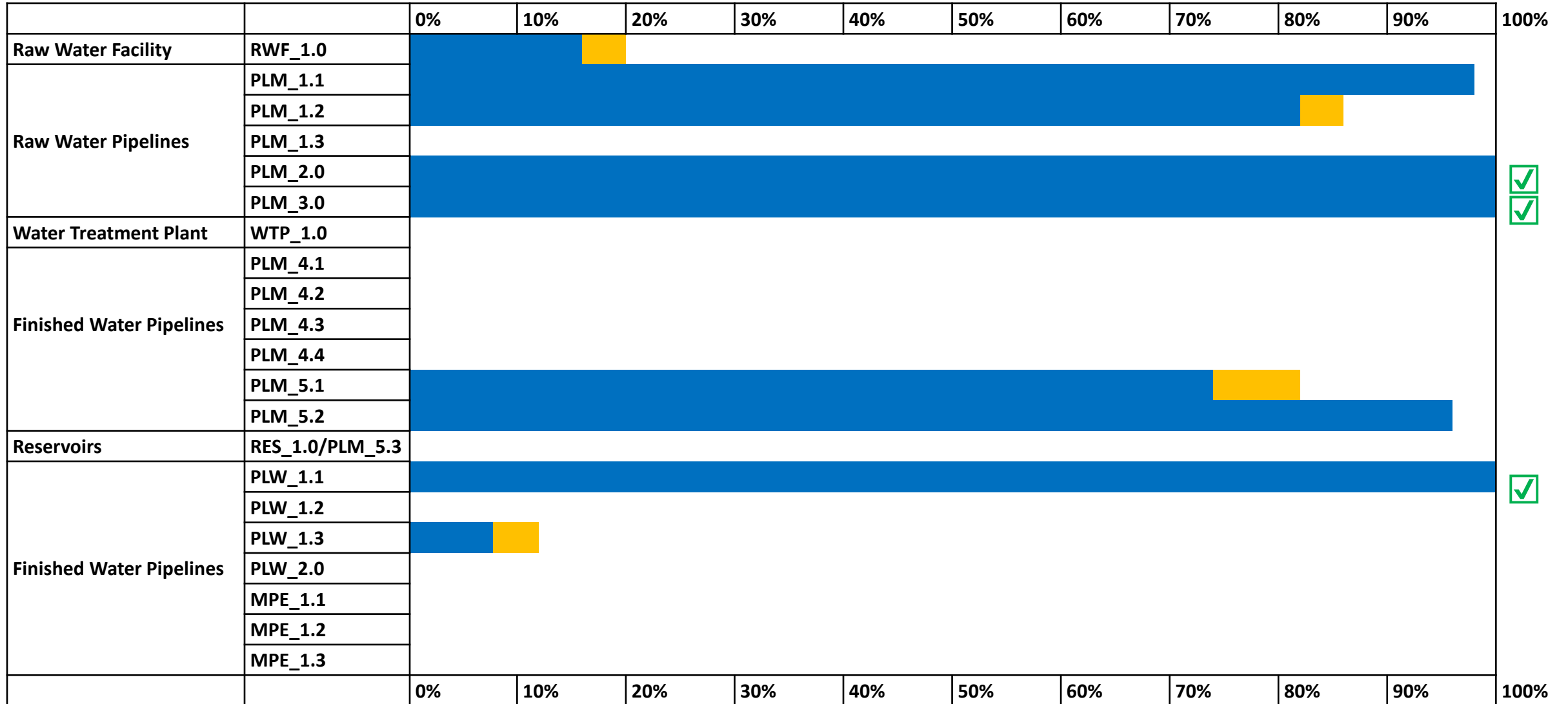


Supporting our economy

To date, 95% of
money spent has
gone to local
employees,
goods and
services.



Construction Project Status (by Cost)



	Completed This Month
	Completed to Date

Construction Update

Projects currently in construction

Willamette Water Supply
Our Reliable Water
PROJECTS



PLM_5.2
(Scholls Ferry/Tile Flat)

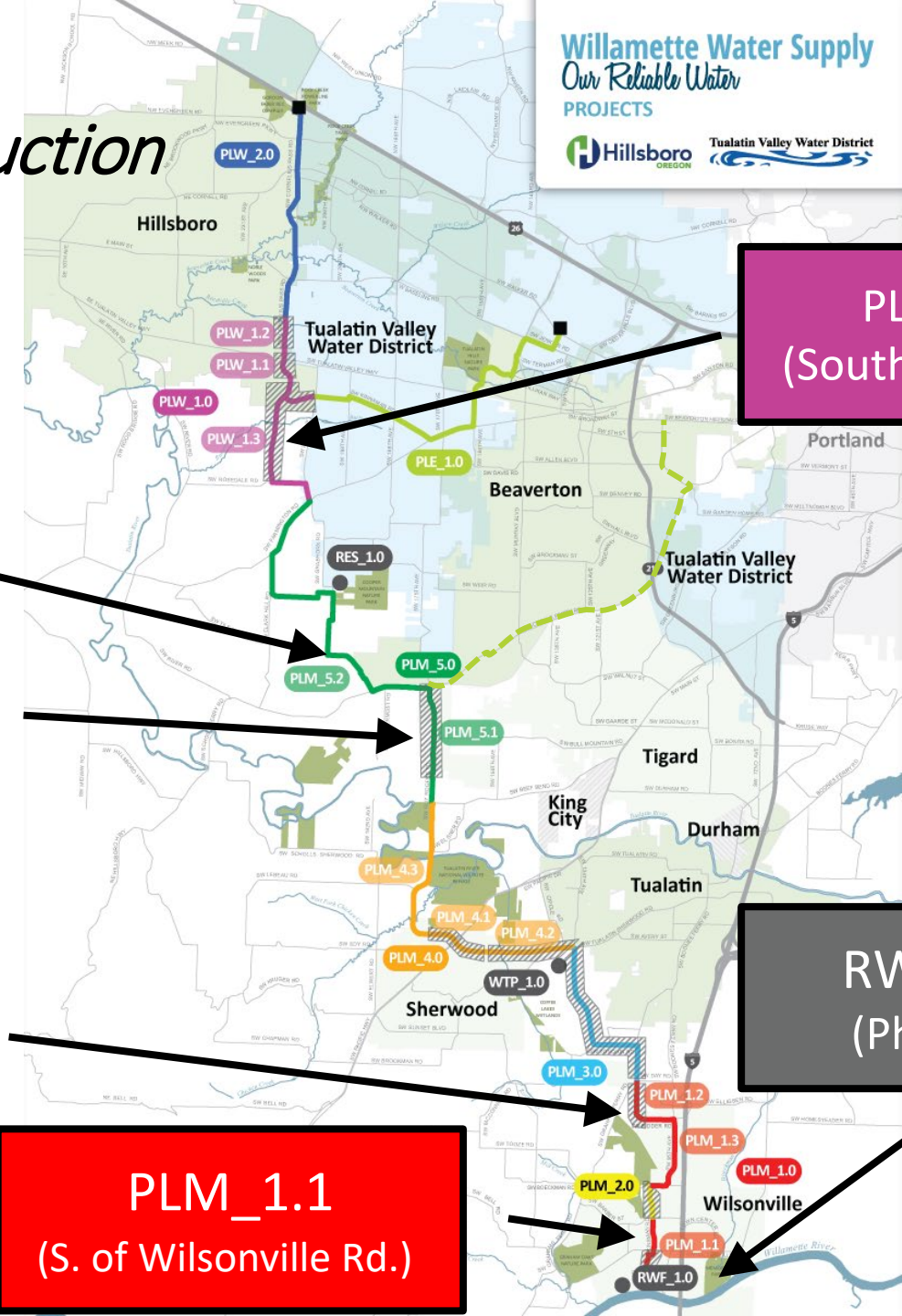
PLM_5.1
(Roy Rogers Rd.)

PLM_1.2
(Garden Acres Rd.)

PLM_1.1
(S. of Wilsonville Rd.)

PLW_1.3
(South Hillsboro)

RWF_1.0
(Phase 1)



RWF_1.0

Contractor: Kiewit Infrastructure West Co.

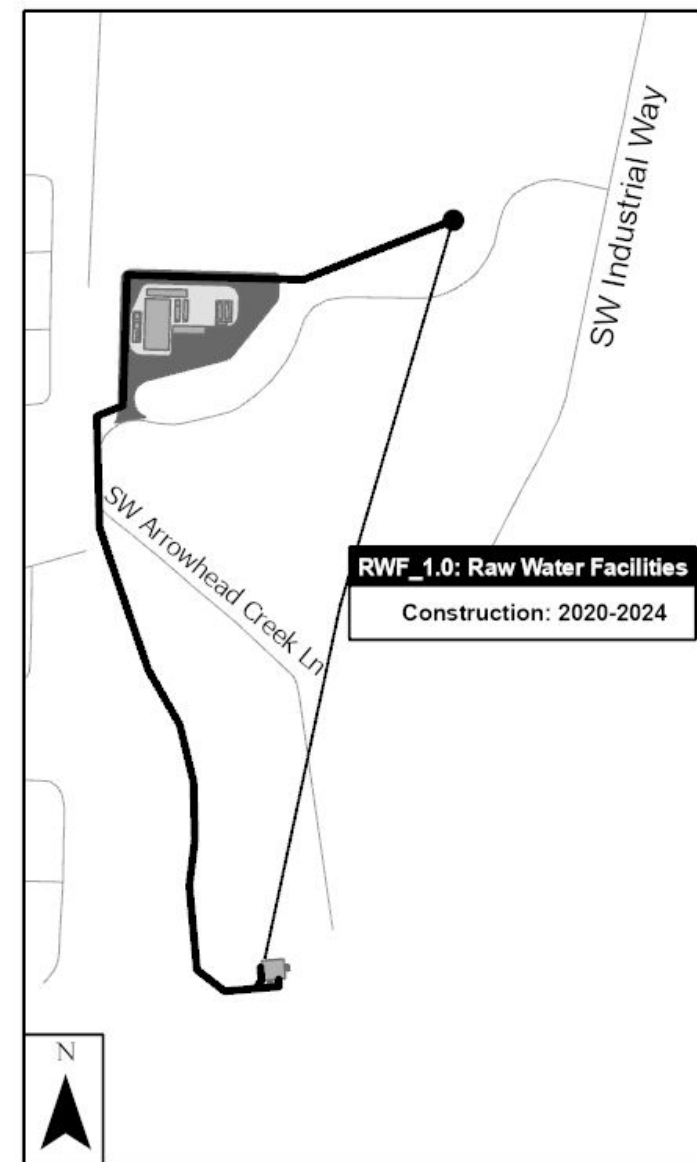
Designer: Black & Veatch

Construction Cost (Phase 1): \$49,026,129

Schedule (Phase 1): June 2020 – February 2022

Major Activities (Phase 1):

- Seismic soil improvements at existing pump station (deep soil mixing and jet grouting)
- Foundation piles for all new structures
- 66" raw water pipeline including tunnel below Arrowhead Creek
- Structural modifications to existing pump station



Construction Photos – RWF_1.0

Upper Site looking north.
Sending and receiving tunnel
shafts in progress.



Construction Photos – RWF_1.0

Lower Site deep soil mixing
at Caisson Zone



PLM_1.1

Contractor: James W. Fowler Co.

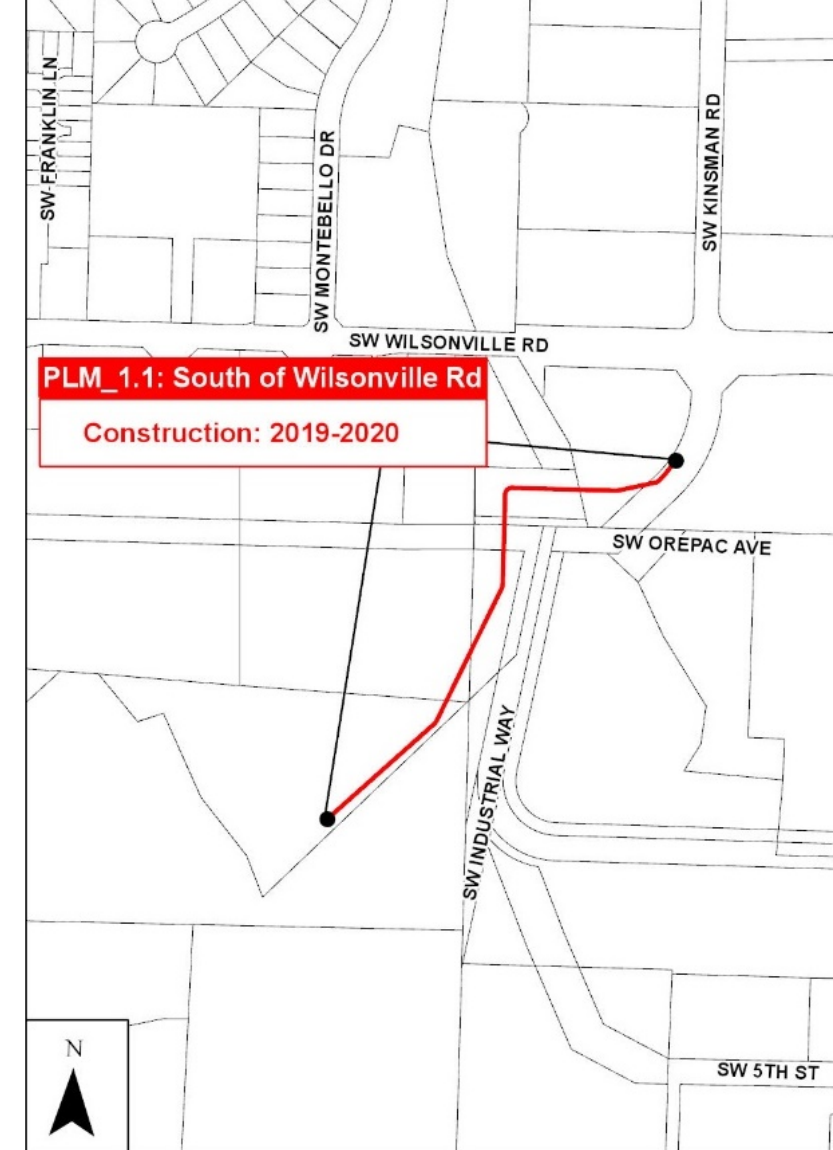
Designer: HDR

Construction Cost: \$2,767,646

Schedule: December 2019 – February 2021

Major Activities:

- 66" raw water pipeline
- Coffee Lake Creek open cut crossing
- Crossing below BPA power lines
- Crossing below 63" Wilsonville waterline
- Concrete road panel restoration and landscaping



Construction Photos – PLM_1.1

Coffee Lake Creek crossing
completed restoration



Construction Photos – PLM_1.1

Aerial view of entire project, topsoil restoration complete, RWF receiving shaft access road.



PLM_1. 2

Partner: City of Wilsonville

Contractor: Moore Excavation Inc.

Designer: HDR

Construction Cost (waterline only): \$7,840,463

Schedule: July 2019 – February 2021

Major Activities:

- 66” raw water pipeline
- Tunnel below SW Day Rd.
- Tie-in to PLM_3.0 pipeline
- “Schedule A” road work



Construction Photos – PLM_1.2

Aerial view of Garden Acres Road



Construction Photos – PLM 1.2

Trenching for 66" waterline



PLM_5.

1

Partner: Washington County

Contractor: Tapani Inc. (Moore Excavation – waterline sub)

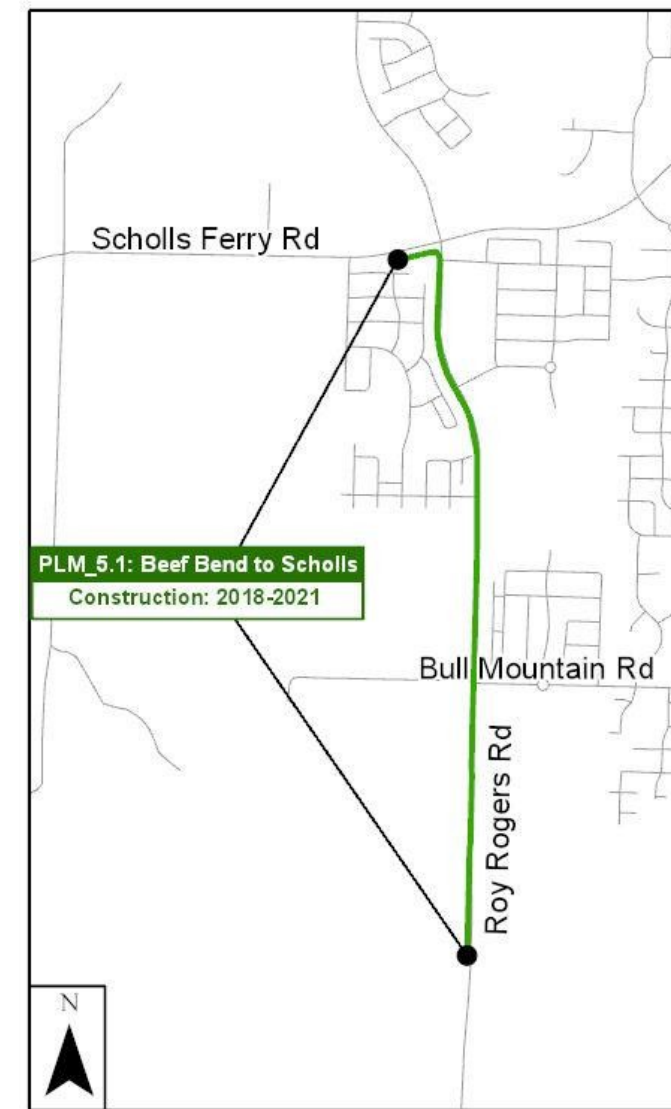
Designer: Jacobs Engineering

Construction Cost (waterline only): \$16,862,512

Schedule: September 2018 – October 2021

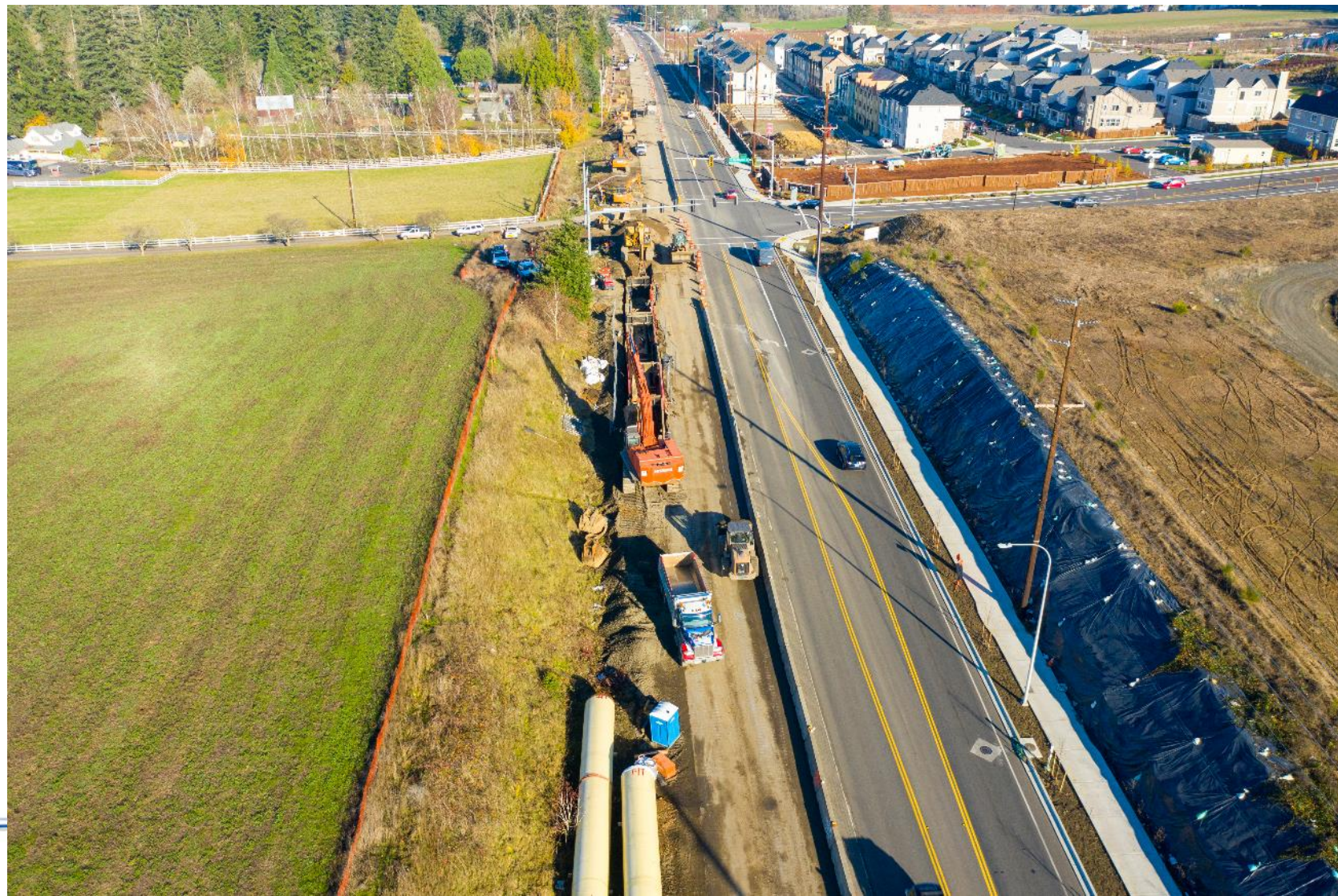
Major Activities:

- 66” finished water pipeline
- Tee connection and 48” valve for future Metzger pipeline
- Tunnel below Tributary 3
- Temporary connection to City of Tigard water system
- Schedule “A” road and bridge widening



Construction Photos – PLM_5.1

Roy Rogers Rd. looking north. 66” pipe installation south of Bull Mtn. Rd.



Construction Photos – PLM_5.1

Tunnel shaft at
“Tributary 3” along
Roy Rogers Rd.



PLM_5.2

Contractor: Emery & Sons

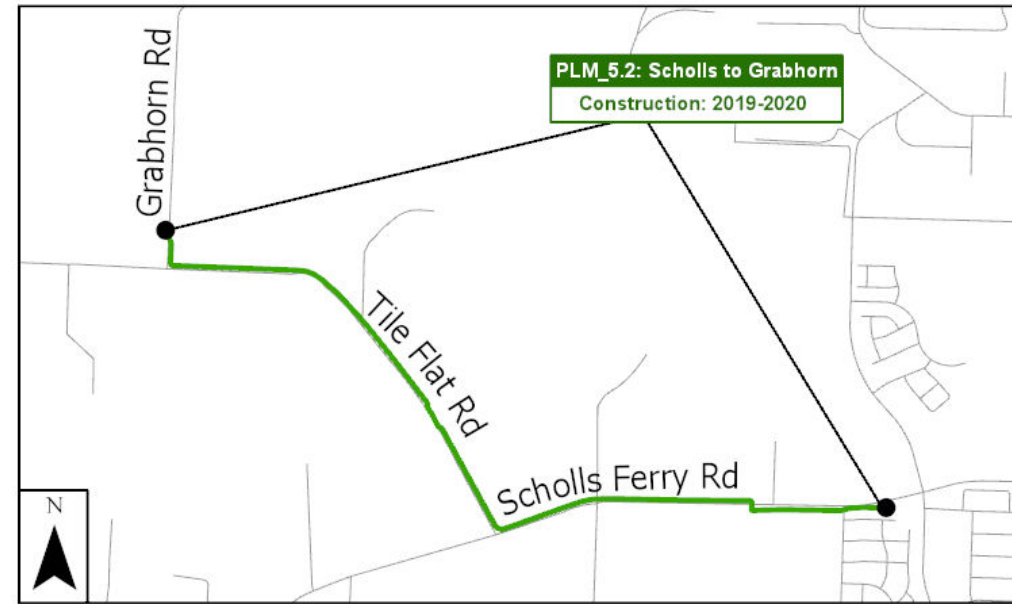
Designer: Jacobs Engineering

Construction Cost: \$15,008,437

Schedule: June 2019 – February 2021

Major Activities:

- 66" finished water pipeline
- Tunnel below Scholls Ferry Rd.
- Coordination with developer projects adjacent to site
- Temporary road closures at Tile Flat Rd. and Grabhorn Rd.



Construction Photos – PLM_5.2

66” pipe construction at Grabhorn Rd.



Construction Photos – PLM_5.2

66” pipeline inside tunneled casing at Scholls Ferry Rd.



PLW_1.3

Contractor: Tapani, Inc.

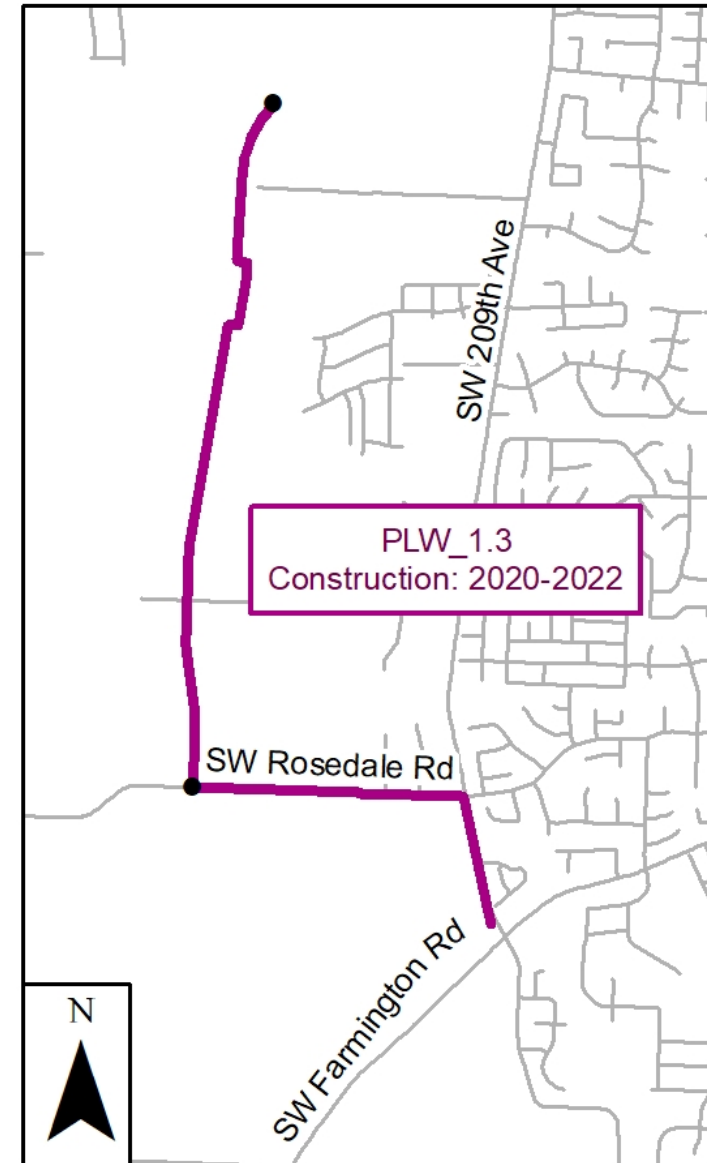
Designer: Kennedy/Jenks

Construction Cost: \$29,016,663

Schedule: August 2020 – August 2022

Major Activities:

- 66" finished water pipeline
- Microtunnel below Butternut Creek
- 30" pipeline and TVWD turnout
- City of Hillsboro turnout



Construction Photos – PLW_1.3

Microtunnel receiving shaft north of Butternut Creek. Looking south



Construction Photos – PLW_1.3

Secant pile construction at the microtunnel launch shaft. Looking north.



Construction Update

Projects bidding in 2021

Willamette Water Supply
Our Reliable Water
PROJECTS

Hillsboro Oregon Tualatin Valley Water District

PLW_2.0
(April 2021)

RES_1.0/PLM_5.3
(Fall 2021)

PLM_4.3
(July 2021)

PLM_4.4
(June 2021)

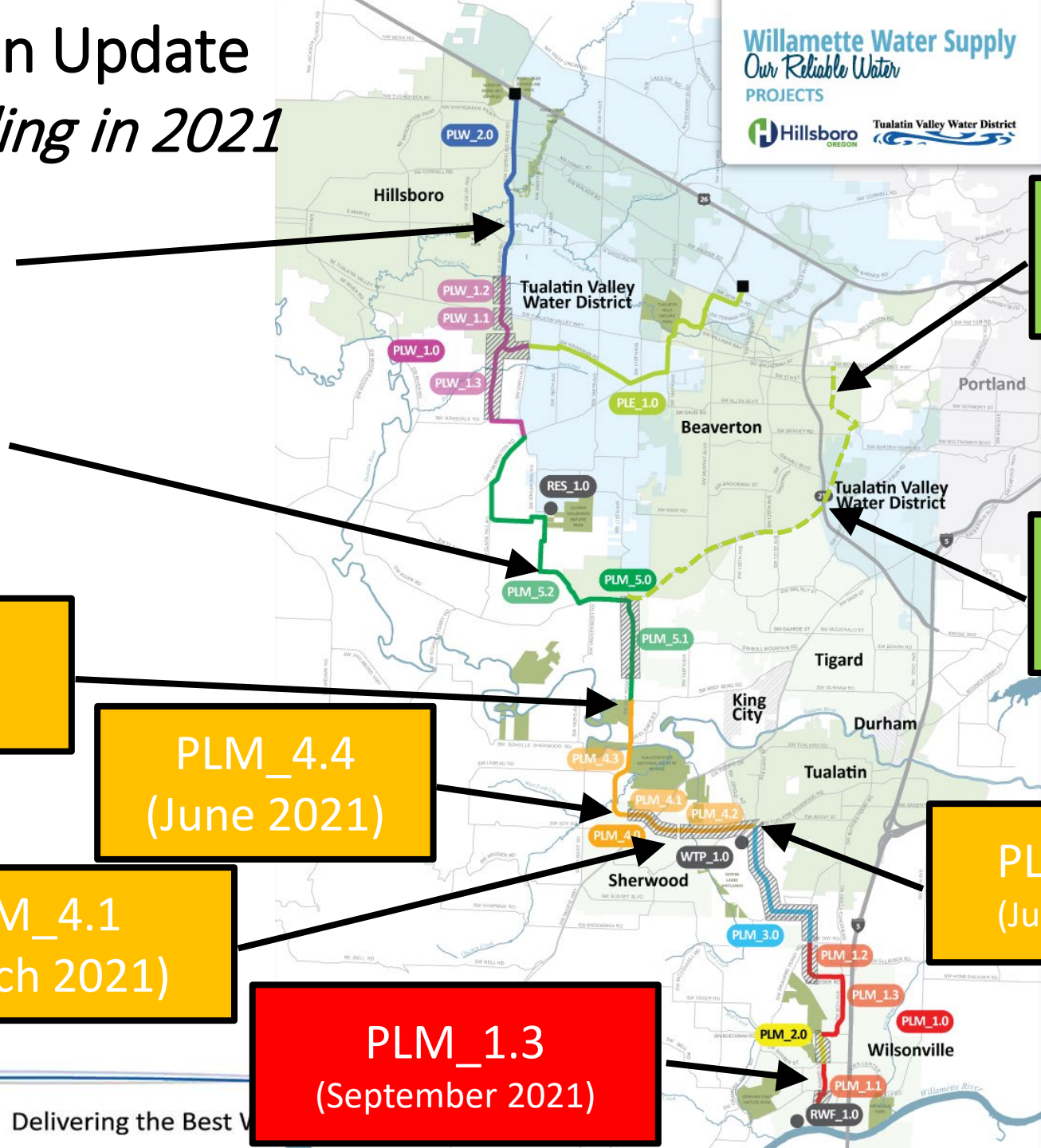
PLM_4.1
(March 2021)

PLM_1.3
(September 2021)

MPE_1.1
(February 2021)

MPE_1.2
(February 2021)

PLM_4.2
(June 2021)



QUESTIONS

Thank you!

Willamette Water Supply Program

503-941-4570

info@ourreliablewater.org

www.ourreliablewater.org



Area traffic updates:

GetUsThere.org

