

***Your Reliable
Drinking Water Future***

A Conversation with Customers



Tualatin Valley Water District



Water is Essential



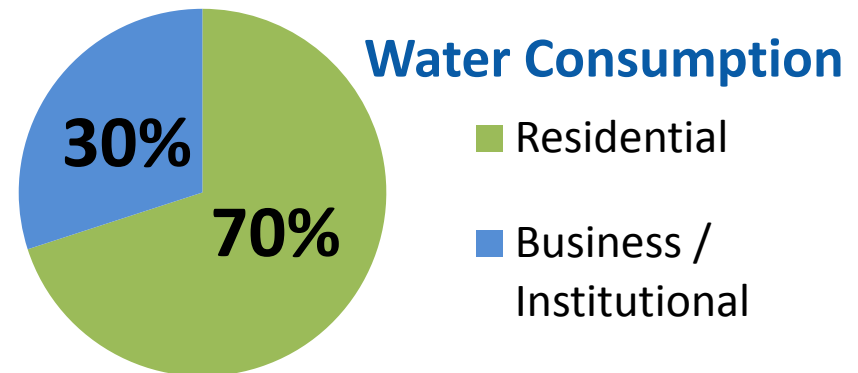
Clean and reliable water supply is essential to **public health** and a **vibrant economy**.

Tualatin Valley Water District provides water to 200,000 people in unincorporated Washington County and portions of Beaverton, Hillsboro and Tigard.



The District is also home to major employers.

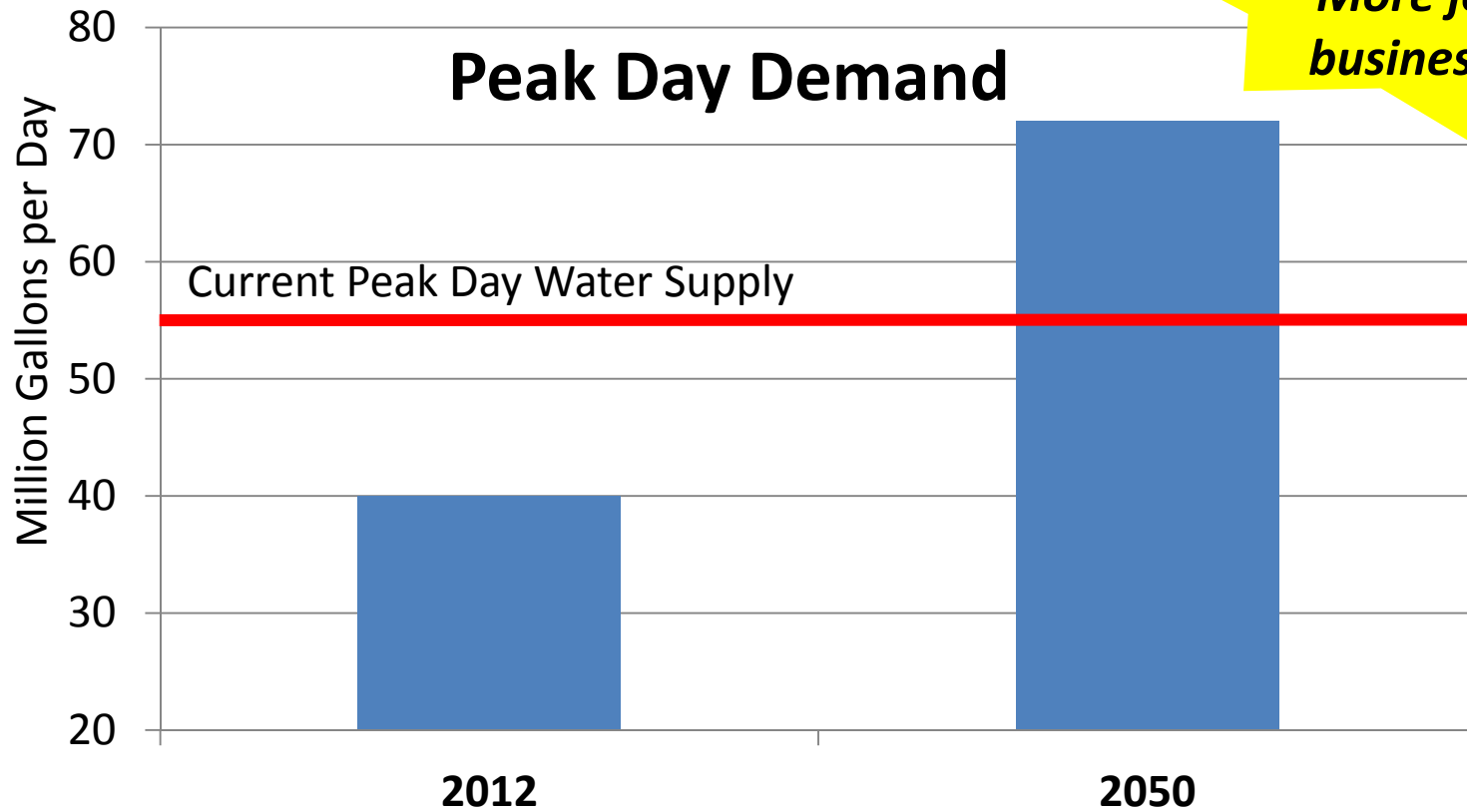
Intel
Nike
Providence St. Vincent
Reser's Fine Foods
Maxim
Tektronix
Beaverton School District



TVWD Looks Ahead

We have enough water for today—but need to take steps to have enough water to meet future demands.

82,000 new residents by 2042. More jobs and businesses too.



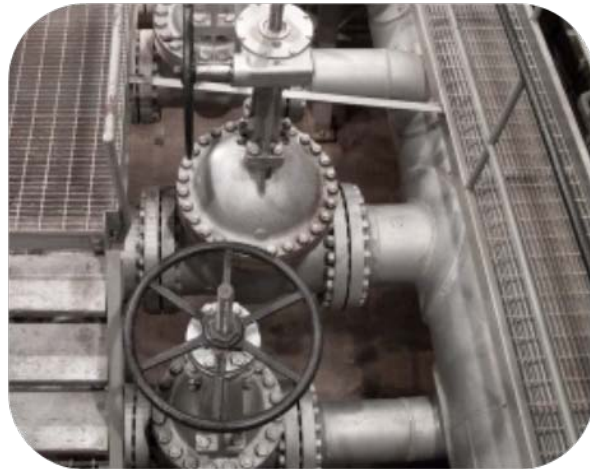
TVWD uses a portfolio of water supplies



Ownership in Tualatin/Trask watershed supply



An aquifer storage and recovery (ASR) well provides backup and summer supply.



Purchase wholesale water from Portland

Multiple water supplies provide reliability.

The District's current water bills are mid-range compared to peer utilities.

TVWD began years ago to prepare for the investment in a new water source.

Compare Current Water Bills

<i>Community</i>	<i>Typical Monthly Residential Bill</i>
Sherwood	\$45.41
Tigard	\$35.37
Portland	\$33.29
Wilsonville	\$30.98
Beaverton	\$28.69
TVWD	\$26.19
Forest Grove	\$25.88
Tualatin	\$23.93
Sunrise Water	\$22.90
Hillsboro	\$21.24

7 ccf per month

Water conservation is a top priority.

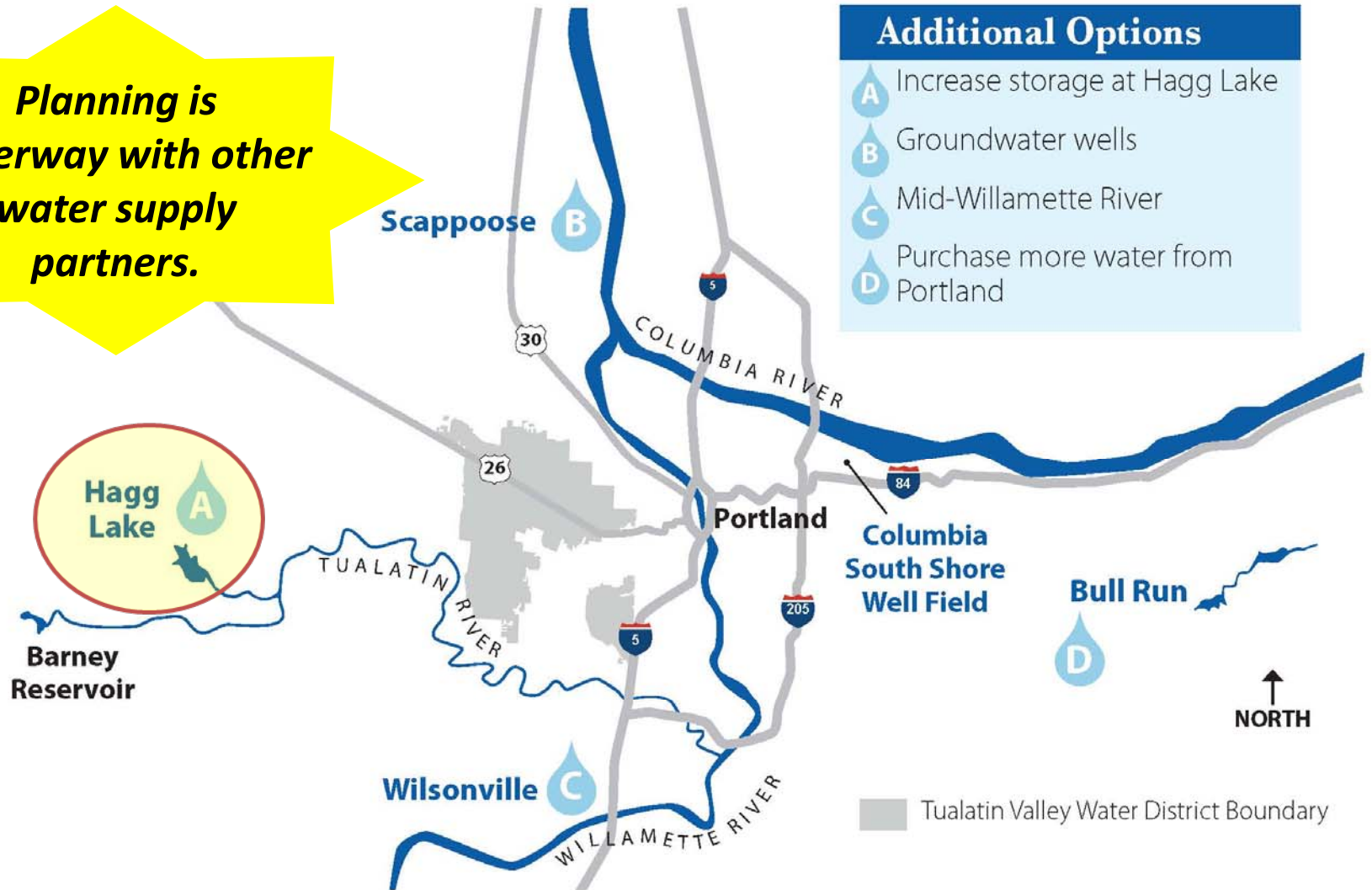
- ✓ Distributed **84,053** free conservation tools (since 2005)
- ✓ Completed **255** site assessments
- ✓ Provided **22,233** rebates
- ✓ Per capita daily water use has decreased **16%**



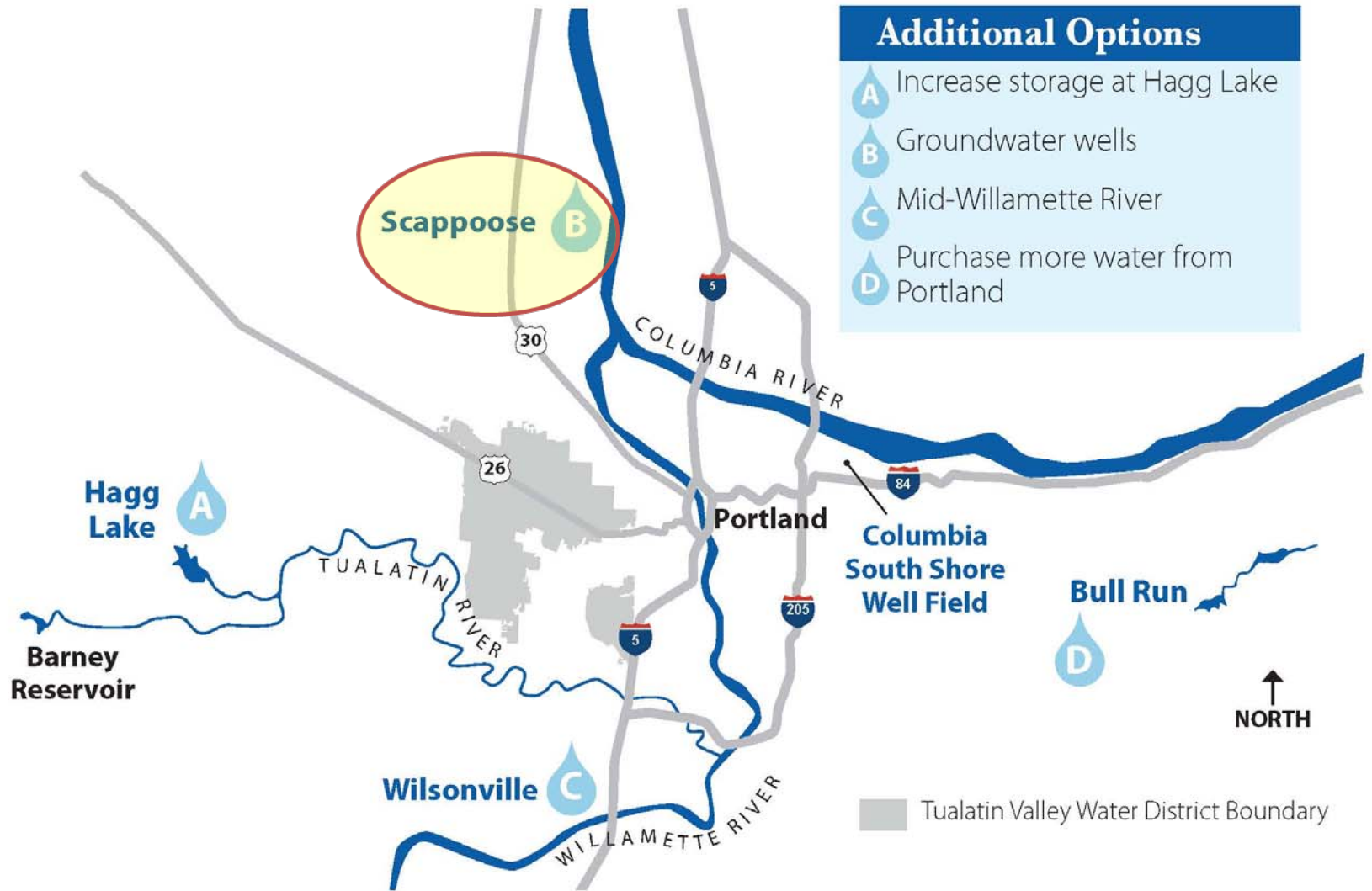
Water conservation will continue to be important, but alone is not enough to meet future needs.

What's being considered?

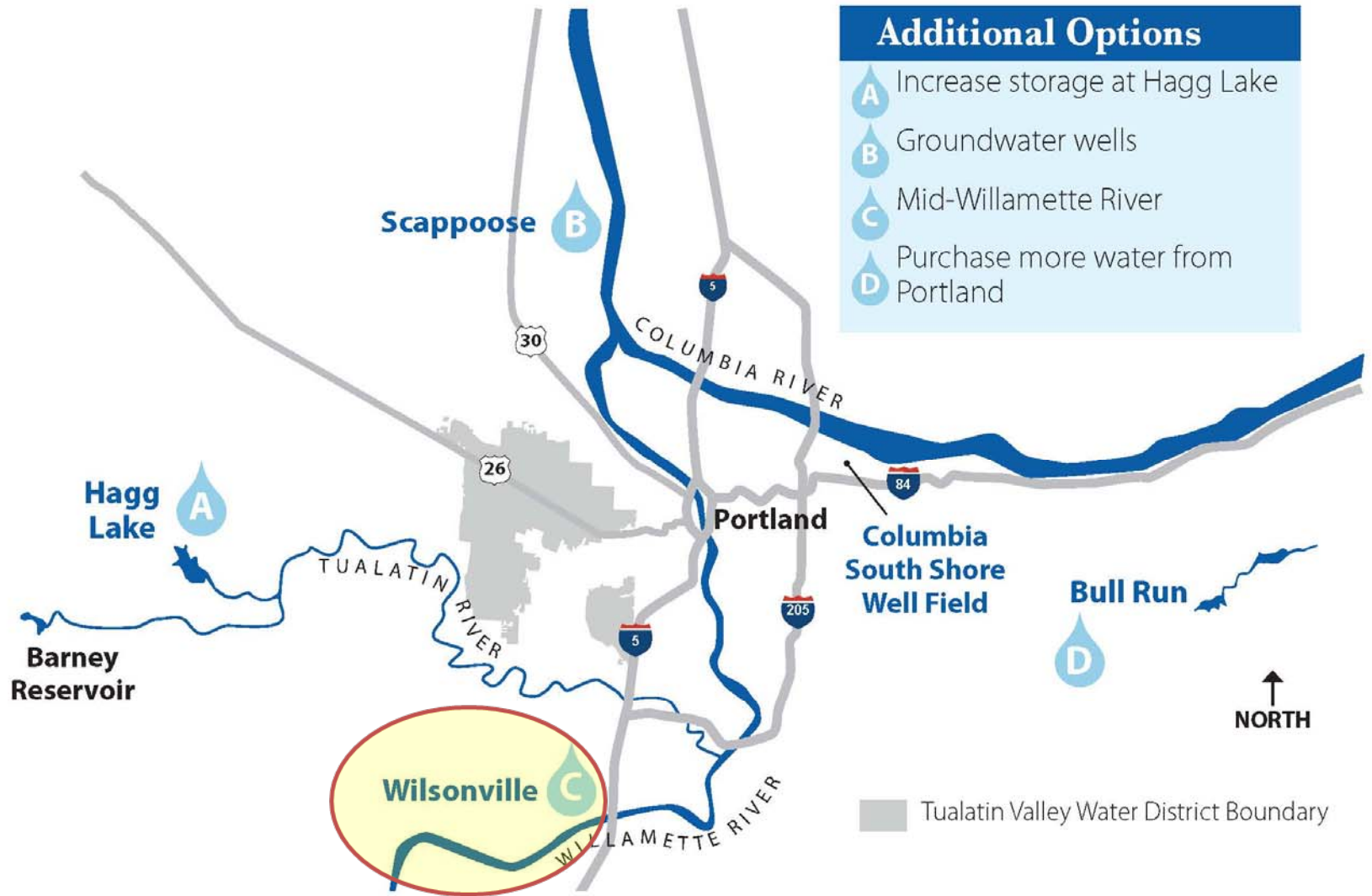
Planning is underway with other water supply partners.



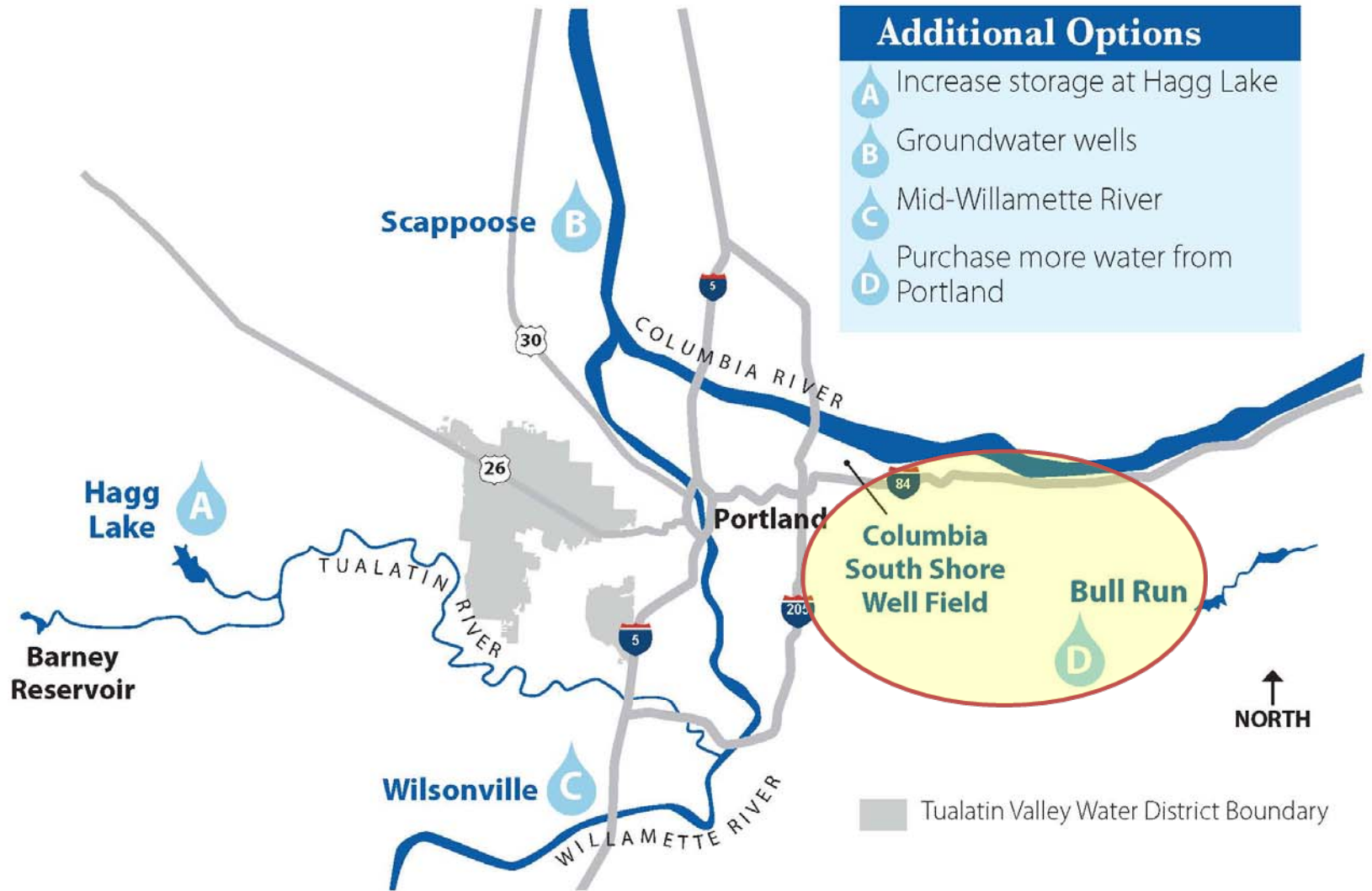
What's being considered?



What's being considered?



What's being considered?

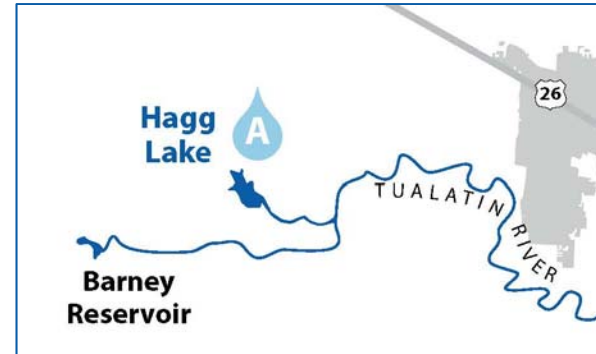


Water supply planning criteria

- ☑ Finished water quality
- ☑ Cost and rate impact
- ☑ Can be right-sized
- ☑ Reliability
- ☑ Redundancy
- ☑ Implementation risk
- ☑ Public and business acceptance
- ☑ Construction impacts
- ☑ Sustainability
- ☑ Ownership / control
- ☑ Non-fluoridated supply for Metzger

Increase Storage at Hagg Lake

- + Good finished water quality
- + Reliable supply
- Challenges:
 - More stringent seismic standards
 - Endangered / threatened species present
 - Federal funding uncertain
- TVWD can't be sure this supply could be implemented in time to meet future water needs.



Northern Groundwater Wells

- + Ownership / control
- + Reliable supply
- + Provides redundancy
- Hard to implement
- Influence of Columbia River raises public acceptance issues
- More unknowns



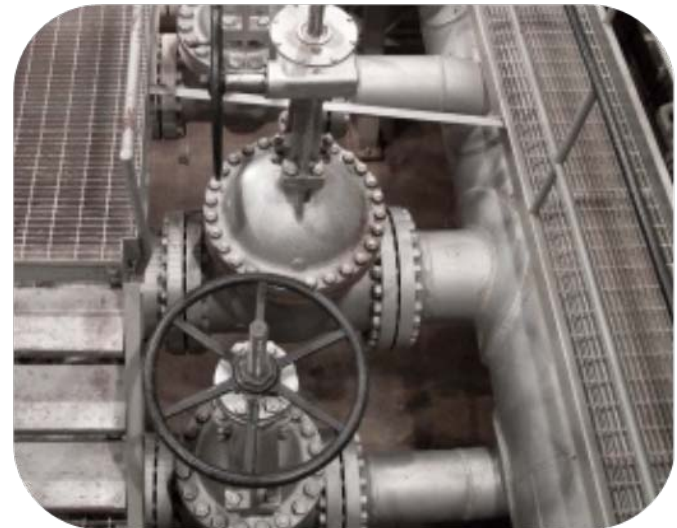
Mid-Willamette River

- + Good finished water quality
- + Ownership / control
- + Reliable supply
- + Provides redundancy
- 0 Implementation risks similar to other water supply projects



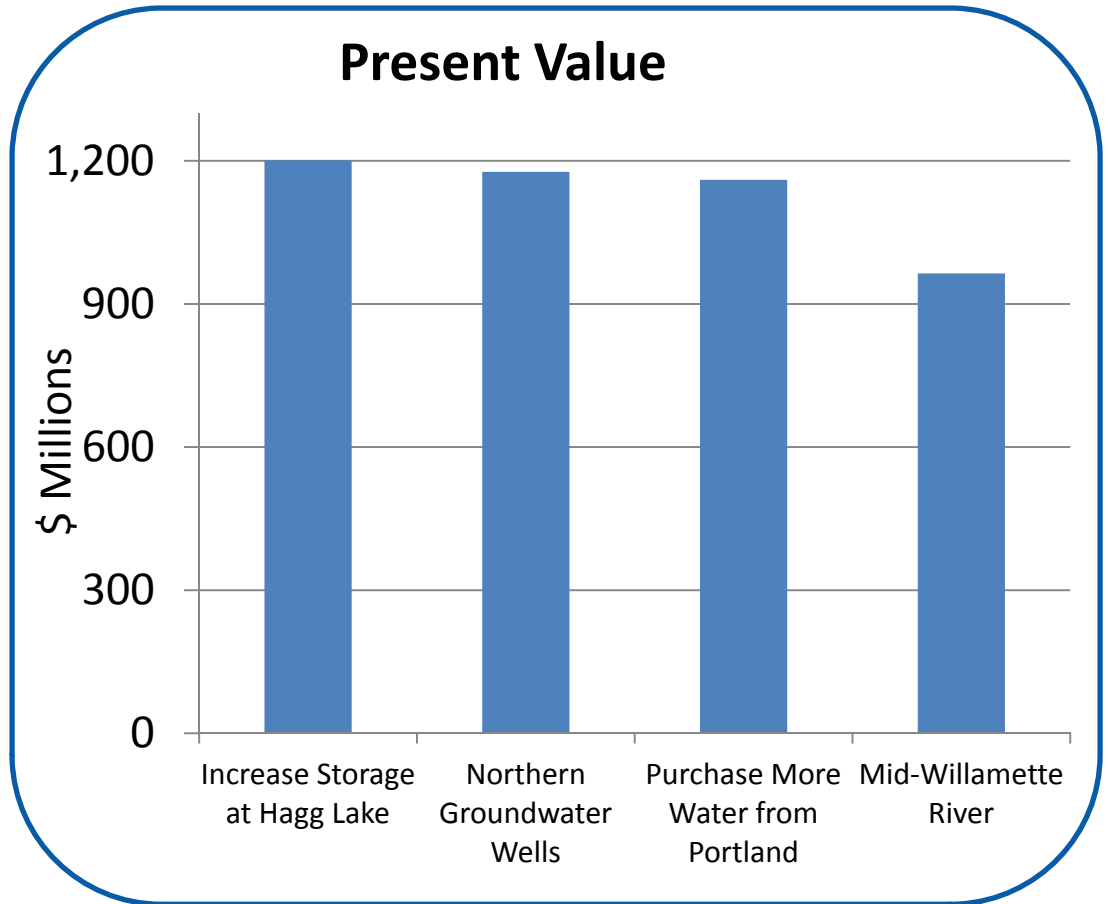
Purchase More Water from Portland

- + Right-sized
- + Public acceptance
- + Sustainable
- No ownership / control
- No added redundancy



Cost and Rate Impacts

- ✓ Economic analysis (present value)
- ✓ Risk analysis
- ✓ Rate impacts



Present Value = construction + ongoing operating costs

Assumptions

Hagg Lake: No federal cost sharing

Portland: TVWD only, no treatment

Willamette River: Metzger served from Portland supply

Schedule

Customer outreach

October 2012 – March 2013

Board of Commissioners' decision for further study

April 2013

***Customer input will
inform upcoming
decisions by the
District's elected
Board of
Commissioners.***



Open House

Saturday, March 02, 2013

Time: 12-1:30 p.m.

Location: TVWD Headquarters

Learn More

Get more details:

www.tvwd.org/your-water/long-term-water-supplies

Contact:

Todd Heidgerken

503-642-1511

supplyoptions@tvwd.org

